

A photograph of three middle school students smiling in a classroom. A boy on the left wears a blue and orange striped shirt. A girl in the center has braids and wears a blue hoodie, holding yellow and green folders. A boy on the right wears a green and white striped shirt. A chalkboard with math equations is in the background.

West Shore School District

Options Review

January 31, 2017



OUTLINE

- I. Existing Conditions Overview
- II. Progress and Schedule
- III. Review of Options
- IV. Questions and Discussion
- V. Next Steps



EXISTING CONDITIONS OVERVIEW

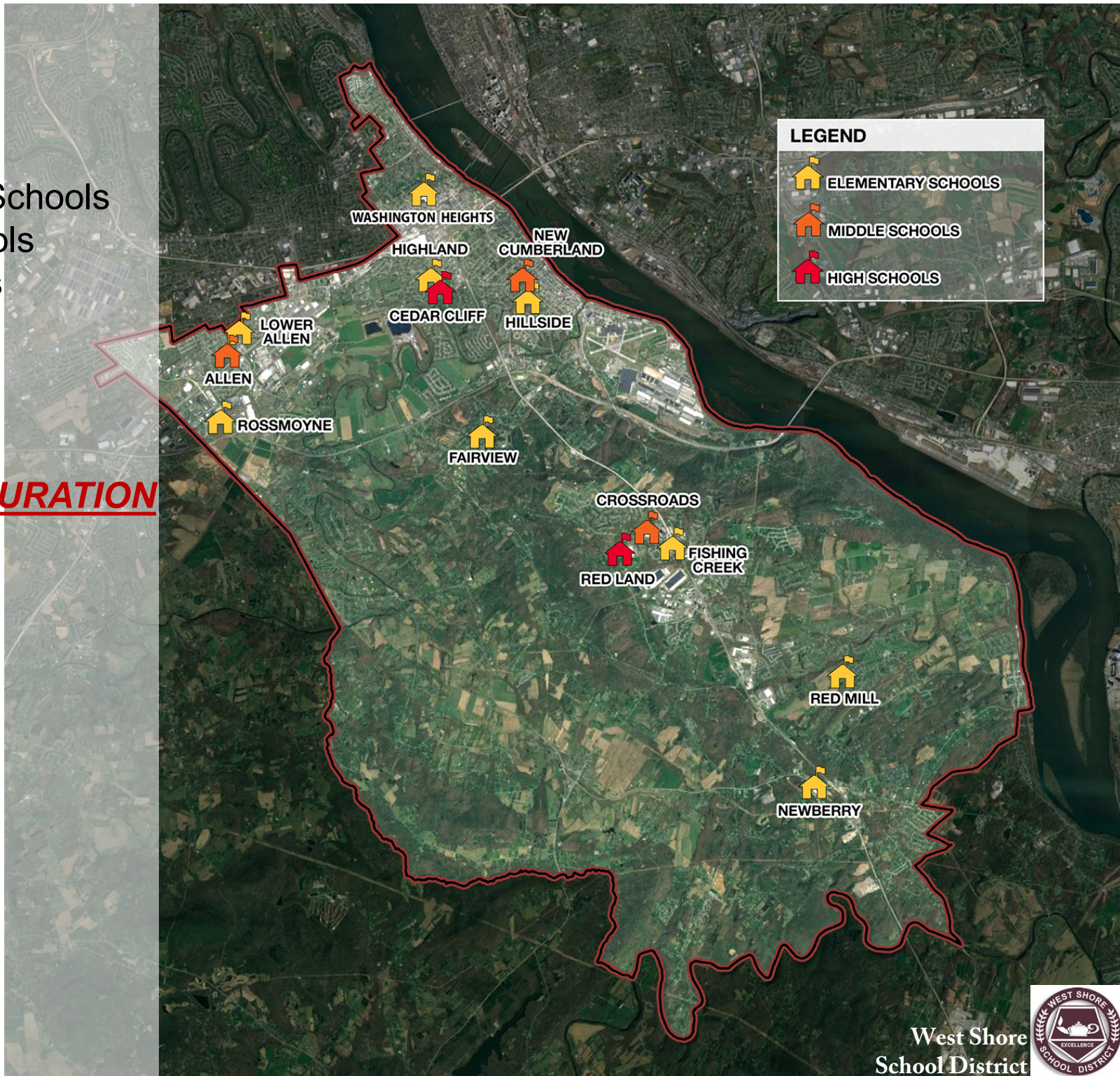
Current Status

14 BUILDINGS

- 9 Elementary Schools
- 3 Middle Schools
- 2 High Schools

GRADE CONFIGURATION

- E.S. = K-5
- M.S. = 6-8
- H.S. = 9-12



WHY CONDUCT A FEASIBILITY STUDY?

1. 2014 Energy Savings Audit Revealed 2 Key Issues
 - a. Opportunities exist for operational and energy savings
 - b. Systems were in dire need of replacement, many were well beyond useful life
2. Our enrollment trend is changing
3. The plans that came out of the 2006 study were disrupted
4. Buildings were closed and/or sold since the last plan was developed.

ENERGY STUDY **– EXISTING** **CONDITIONS**

Seven (7) schools without air conditioning:

- Allen and New Cumberland Middle Schools
- Fairview, Fishing Creek, Lower Allen, Newberry and Rossmoyne Elementary Schools

Six (6) schools with heating plans or systems more than 30 years old:

- Cedar Cliff High School (scheduled Summer 2017), Allen Middle School
- Fairview, Fishing Creek, Lower Allen, and Newberry Elementary Schools

Six (6) schools with at least some single pane windows:

- Red Land High School, Allen and New Cumberland Middle Schools
- Fishing Creek, Lower Allen and Newberry Elementary Schools

Substantial energy cost reductions available through fuel conversions.

PHYSICAL **CHALLENGES**

- Building Security
- Inadequate Intercoms
- No Sprinklers
- Poor Site Lighting
- Minimal Emergency Lighting
- Failing Electrical Service
- Handicap Accessibility
- Lack of Ventilation & No Air Conditioning
- Building Envelope and Drainage Problems
- Deteriorated Plumbing
- Obsolete/Inadequate Indoor Lighting

Existing Conditions and Systems

WEST SHORE SCHOOL DISTRICT - EXISTING BUILDING ANALYSIS					
	Level of Need	School Name	BUILDING CONDITION	SYSTEMS CONDITION	AC/ NO AC
ELEMENTARY SCHOOLS					
	1	Fairview ES	FAIR	POOR	NO
	1	Fishing Creek ES	POOR	POOR	NO
	3	Highland ES	GOOD	GOOD	YES
	3	Hillside ES	GOOD	GOOD	YES
	1	Lower Allen ES	POOR	POOR	NO
	1	Newberry ES	POOR	POOR	NO
	2+	Red Mill ES	GOOD	FAIR	YES
	1	Rossmoyne ES	FAIR	POOR	NO
	3	Washington Heights ES	GOOD	GOOD	YES
	TOTAL CAPACITY				
MIDDLE SCHOOLS					
	2	Allen MS	FAIR	POOR	PARTIAL
	2+	Crossroads MS	GOOD	FAIR	YES
	N/A	Leymoyne MS	-	-	-
	1	New Cumberland MS	POOR	POOR	PARTIAL
	TOTAL CAPACITY				
HIGH SCHOOLS					
	3*	Cedar Cliff HS	GOOD/ FAIR	GOOD/ FAIR*	YES*
	3	Red Land HS	GOOD/ FAIR	GOOD/ FAIR	YES
	TOTAL CAPACITY				
* Assumes 2017 HVAC replacement					

5-Year Enrollment Analysis

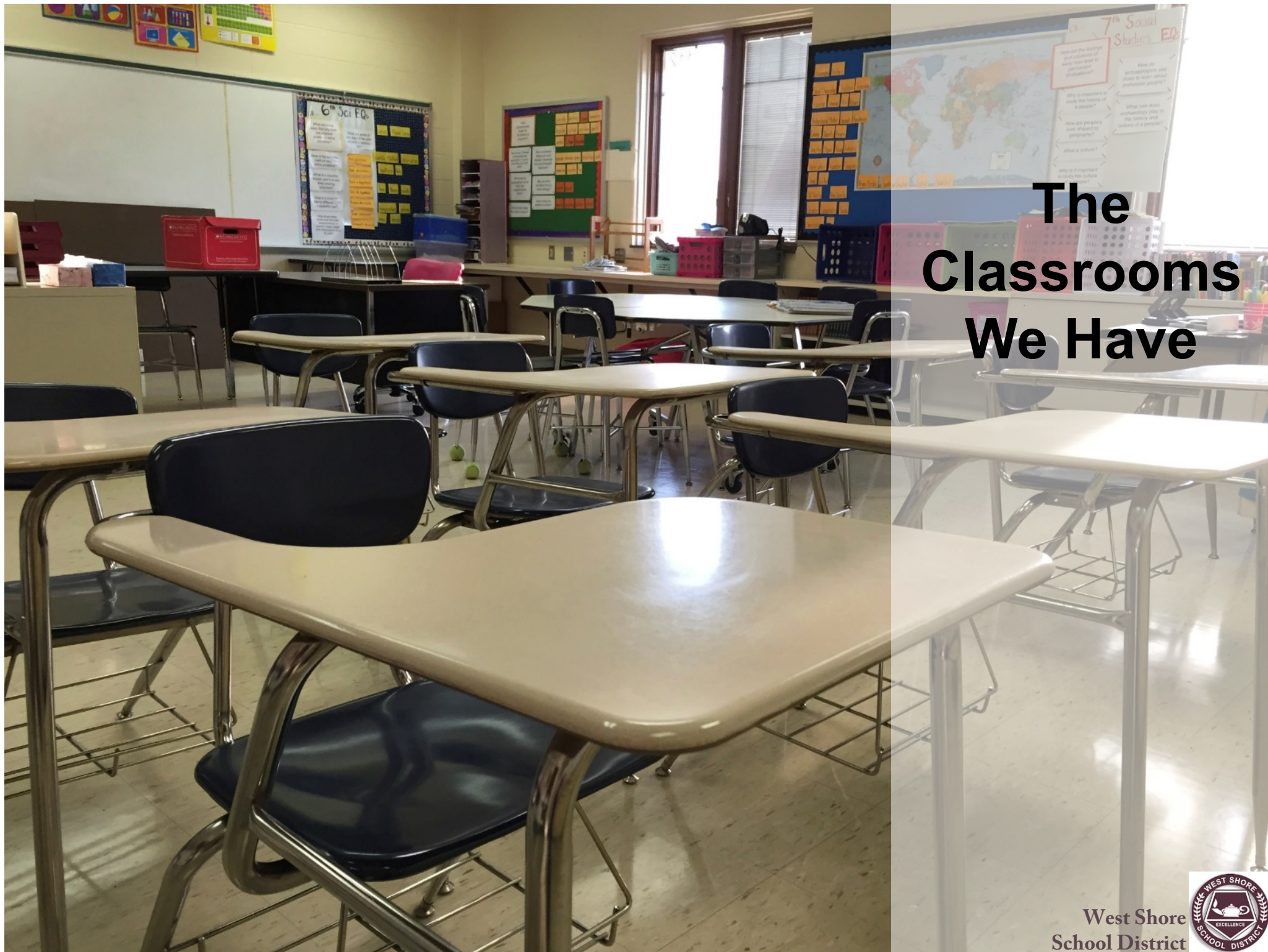
Elementary Schools	Current Enrollment	Projected Enrollment (2021)	Change
Fairview	223	242	8.52%
Fishing Creek	463	485	4.75%
Highland	480	454	-5.42%
Hillside	587	537	-8.52%
Lower Allen	182	238	30.77%
Newberry	349	352	0.86%
Red Mill	599	546	-8.85%
Rossmoyne	199	232	16.58%
Washington Heights	394	380	-3.55%
Middle Schools	Current Enrollment	Projected Enrollment (2021)	Change
Allen	523	554	5.93%
Crossroads	694	716	3.17%
New Cumberland	607	606	-0.16%
Lemoyne (2012)			
High Schools	Current Enrollment	Projected Enrollment (2021)	Change
Cedar Cliff	1252	1377	9.98%
Red Land	1152	1106	-3.99%

TOP 5 SKILLS SOUGHT BY EMPLOYERS

- Ability to work in a team structure
- Ability to make decisions and solve problems
- Ability to communicate verbally with people inside and outside the organization
- Ability to plan, organize, and prioritize work
- Ability to obtain and process information

The Modern Workspace





The Classrooms We Have

West Shore
School District



The Classrooms We Need



INSTRUCTIONAL **CHALLENGES**

- Lack of Space to Support Programs
- Inadequate Spaces to Meet Student Needs
- Spaces Needed to Support 21st Century Teaching & Learning

II.

PROGRESS & SCHEDULE

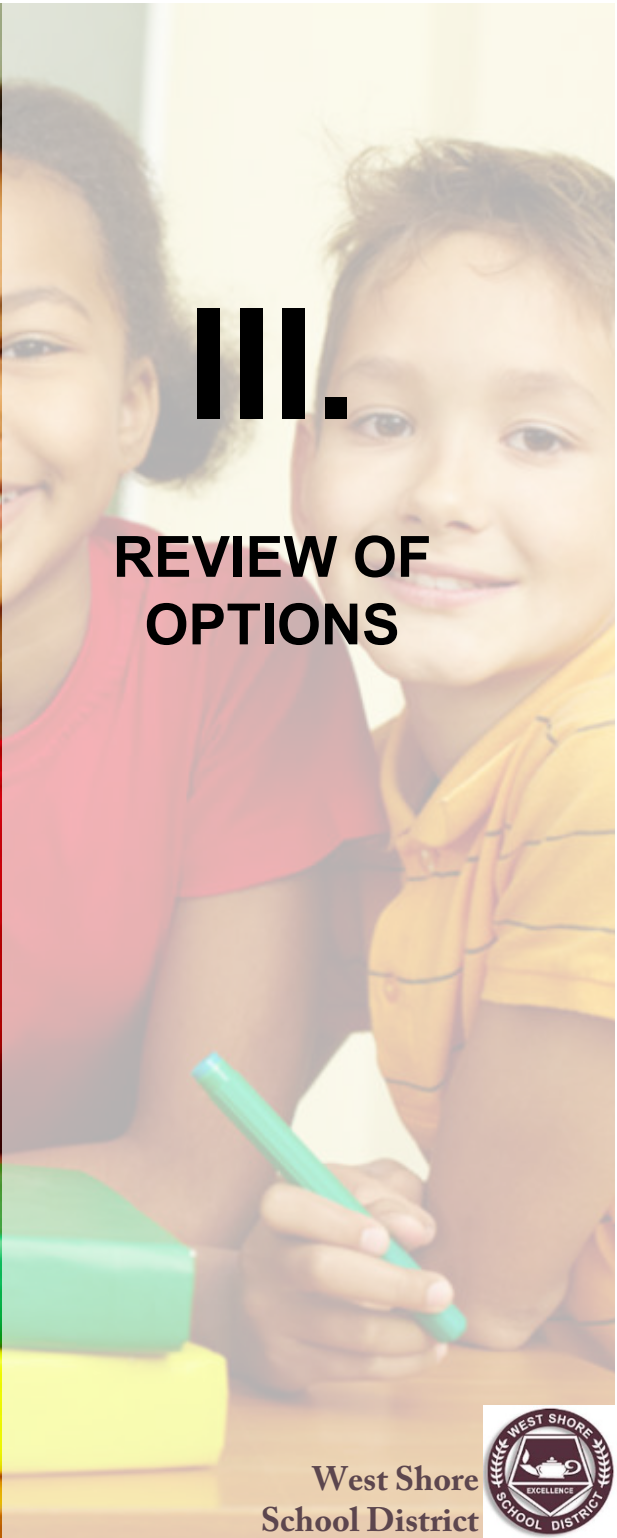
SCHEDULES & TASKS

- ✓ Demographics Study
- ✓ Facility Review
- ✓ Educational Specifications
- ✓ Development of Options
- Presentations



III.

REVIEW OF OPTIONS



GRADE CONFIGURATION

- E.S. = K-3
- I.S. = 4-6
- M.S. = 7-8
- H.S. = 9-12

New Buildings

- K-3/4-6 at Newberry
- K-3/4-6 at Allen
- K-3 at Fishing Creek
- 4-6 at Hillside
- 7-8 at Fairview

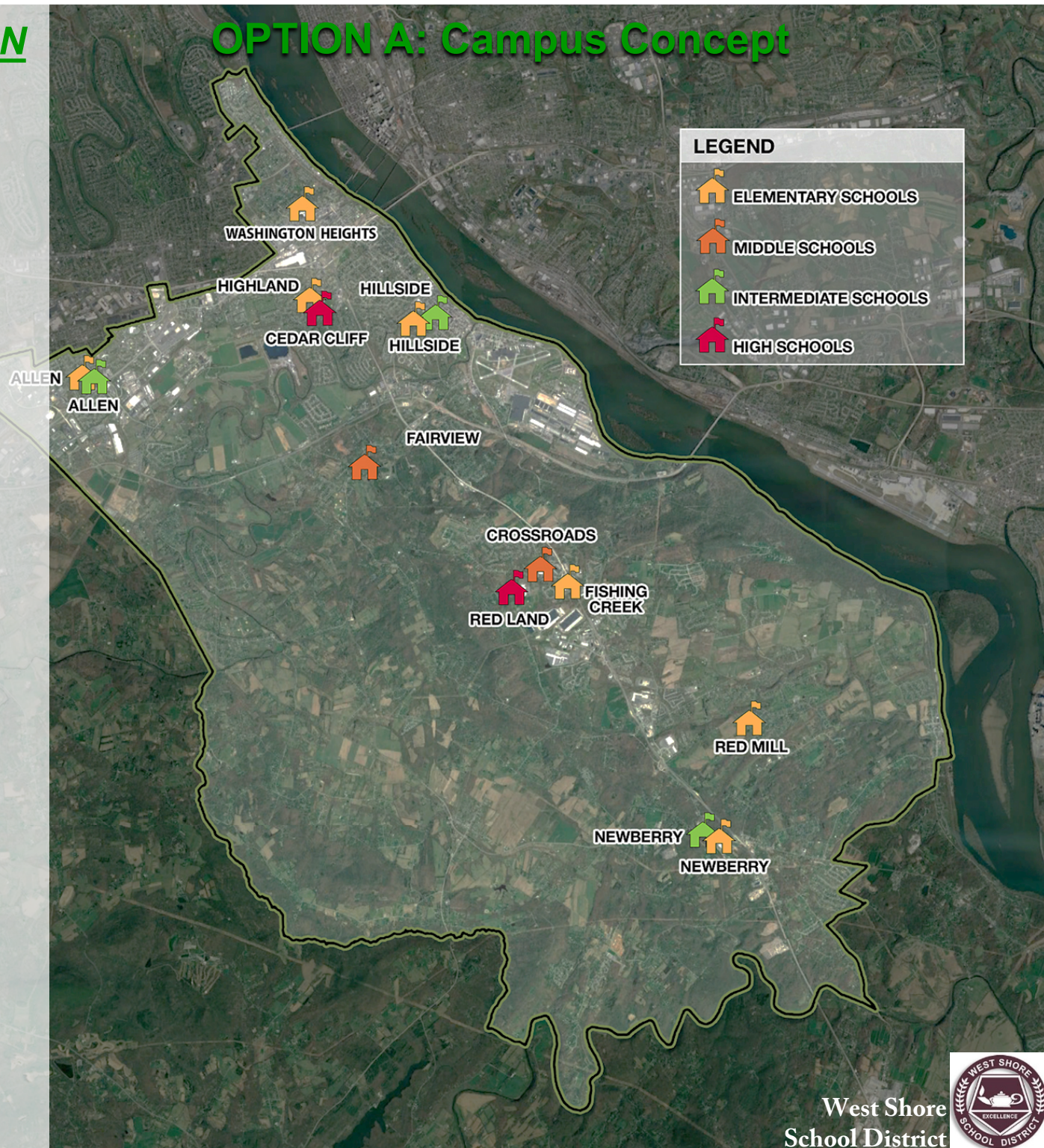
Vacated Properties

- Lower Allen ES
- Rossmoyne ES
- Lemoyne MS
- New Cumberland MS

Demolished Buildings

- Newberry ES
- Allen MS
- Fishing Creek ES
- Fairview ES

OPTION A: Campus Concept



GRADE CONFIGURATION

- E.S. = K-4
- I.S. = 5-6
- M.S. = 7-8
- H.S. = 9-12

New Buildings

- K-4 at Newberry
- K-4 at Fishing Creek
- K-4 at Rossmoyne
- 5-6 at Red Mill
- 7-8 at Fairview

Major Renovations

- Allen

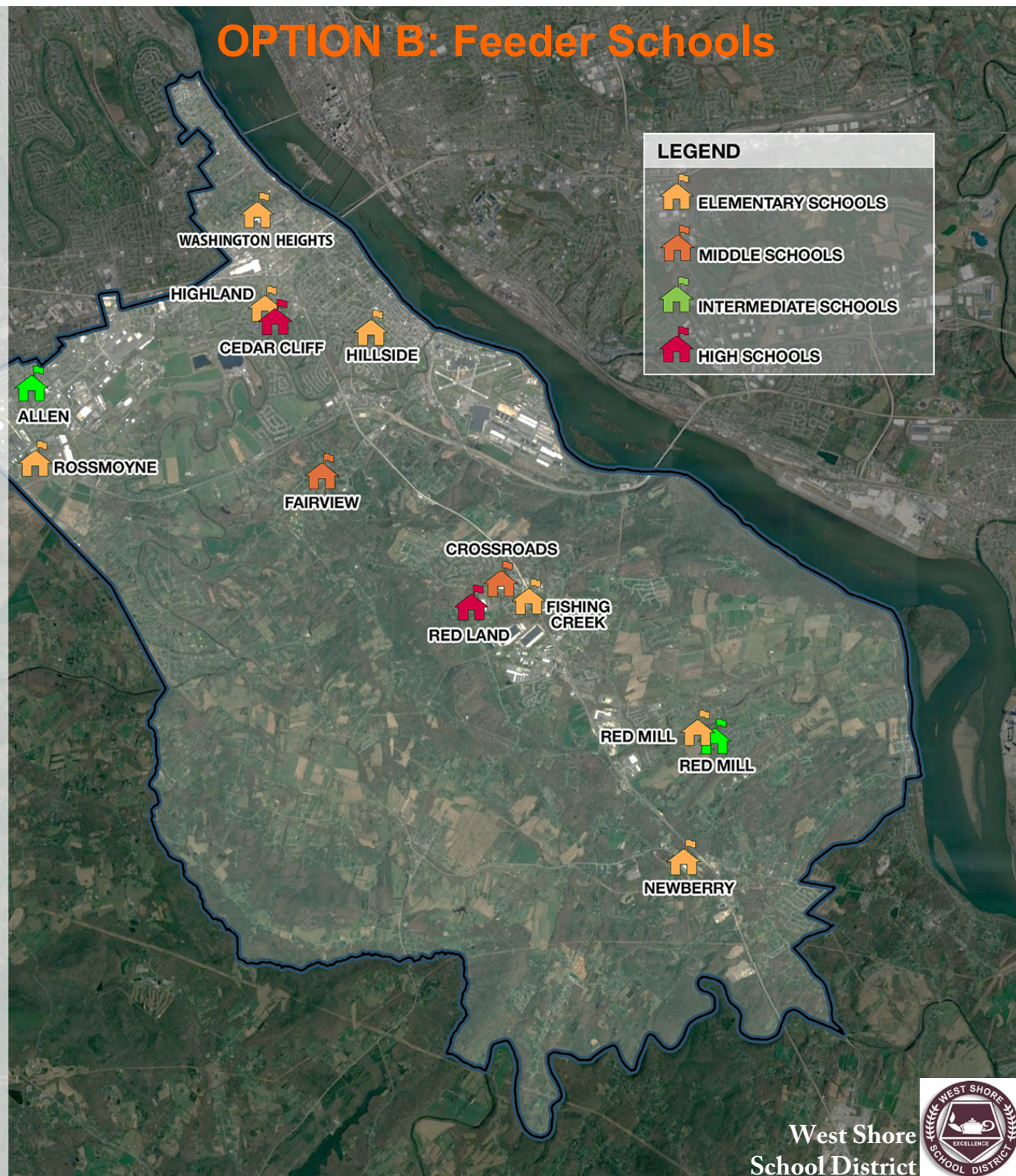
Vacated Properties

- Lower Allen ES
- Lemoyne MS
- New Cumberland MS

Demolished Buildings

- Newberry ES
- Fishing Creek ES
- Fairview ES
- Rossmoyne ES

OPTION B: Feeder Schools



GRADE CONFIGURATION

- E.S. = K-5
- M.S. = 6-8
- H.S. = 9-12

New Buildings

- K-5 at Newberry
- K-5 at Fairview
- K-5 at Fishing Creek

Major Renovations

- Crossroads MS
- Red Land HS
- Cedar Cliff HS
- Allen MS

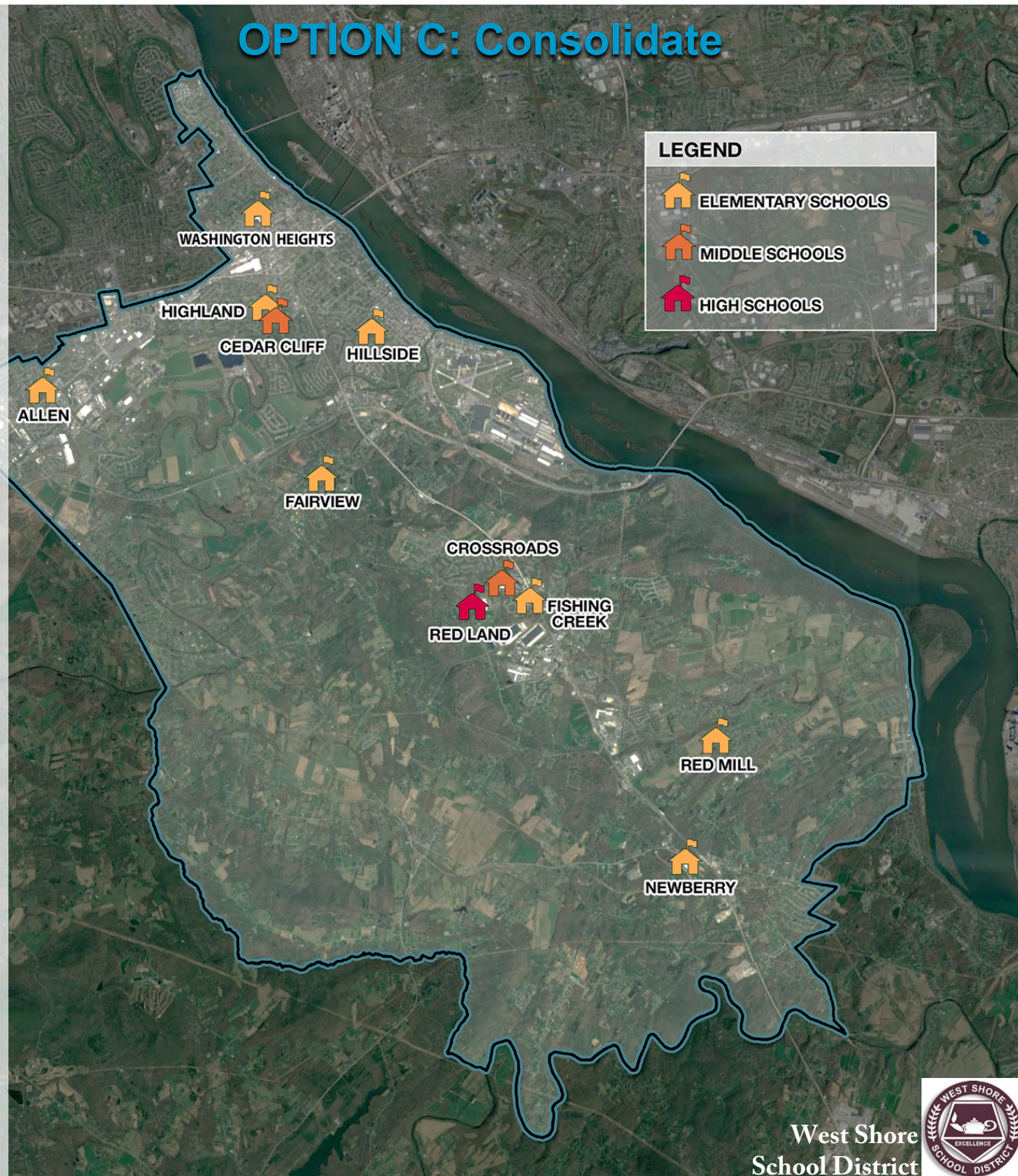
Vacated Properties

- Lemoyne MS
- New Cumberland MS
- Lower Allen ES
- Rossmoyne ES

Demolished Buildings

- Newberry ES
- Fishing Creek ES
- Fairview ES

OPTION C: Consolidate



IV.

QUESTIONS AND DISCUSSION



V.

NEXT STEPS